

MINI ARROW

Parts List

1 Wing
2 Elevons
2 Rudders
1 Battery base
2 Skid/Battery Box Rails
2 Lazertoyz Control Horns
2 Push Rods

Suggested Parts

Motor 9 gram 50 watt or the 16 gram 70 watt Lazertoyz motors
ESC 6 to 10 amp
Battery 250-350 7.4V 2 cell
 250-350 11.1 3 cell
Recommended ... 9 gram motorw 10A esc , 5x3 prop, 350mah 11.1v 3 cell

Instructions-

Remove the Ink from the manufacturer with a mild spray window cleaner. Let it soak on the ink for 2 minutes and wipe off with a little pressure using a clean soft rag using pressure on the foam.

You may paint the foam with H2O paint or a quick dry paint using very light coats letting it dry between coats.

Assembly:

I use hot glue to glue all of the parts in place. There is a skin on the foam that can lift with the glue in a hard crash if you like you can cut just the thin skin layer around the rudders and the motor mount and get better adhesion the core foam .

Place the leading edge of the rudders about 1" in front of the servo holes. On the Arrow angle the rudders at 90 deg. You can angle these with little difference in flying characteristics; it is just a "Cool Factor"

Make sure the rudders are parallel with the wing tips. The trailing edge is cut a slight angle so don't use it as a rudder alignment reference.

Place the stick mount on the wood motor stick. Glue the motor Mount on allowing the mount to stick out slightly into the Prop Opening, This if for the "Stick" Mount for your motor.

Flip the Arrow over and Mark where you want the Base of the Battery box located. Make sure your battery fits in this box. There is extra Foam that will extend beyond

the Leading edge. You will trim this off after the glue has set.

Align your Elevons with the angled edge toward the bottom of the plane. Take a piece of packing tape and take on the top surface half on the wing and half on the Elevons for your hinge.

Hint: Place scotch tape on the servos to make it easy to remove the glue later if needed.

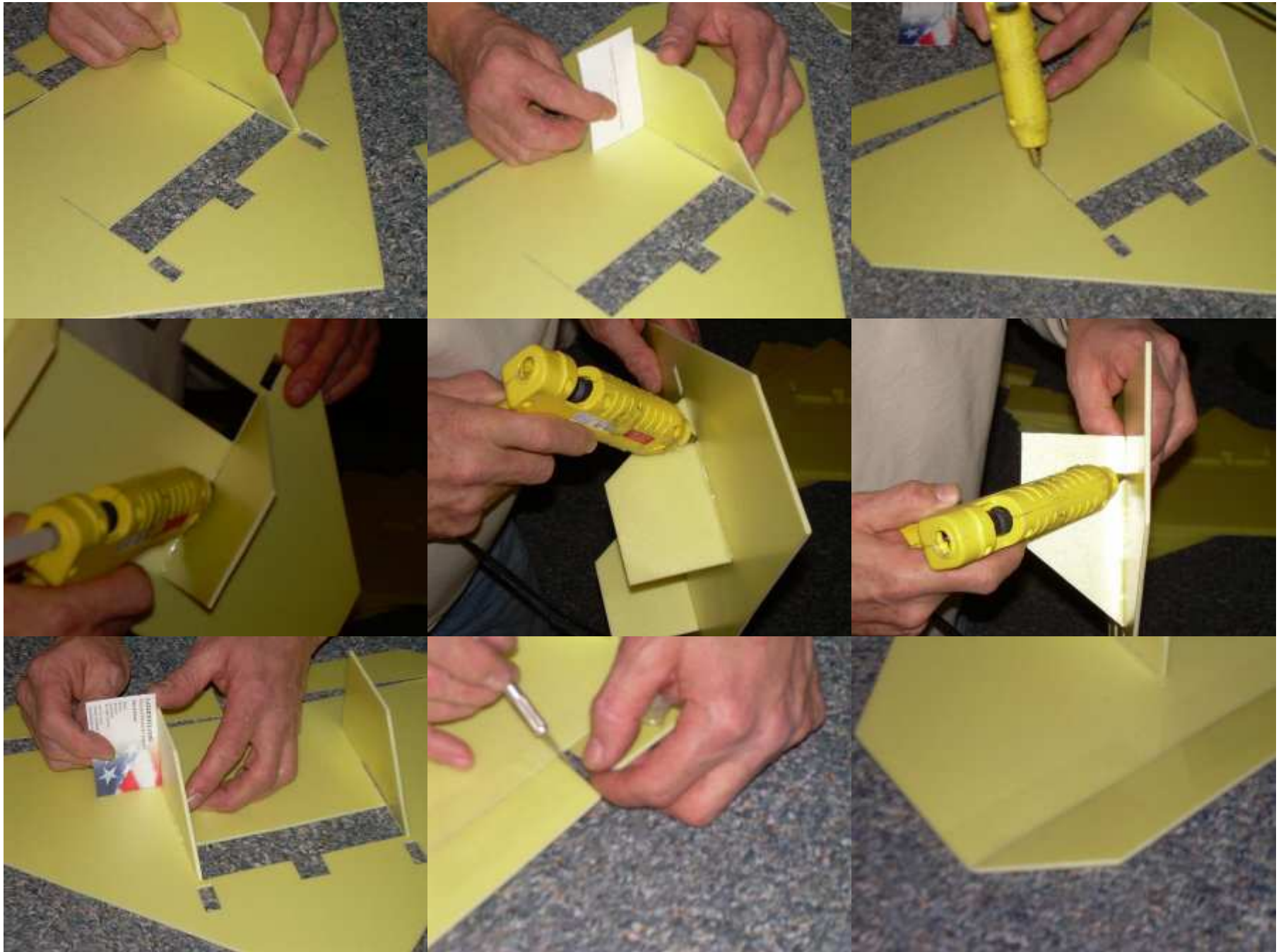
Place your servos in the hole orienting them the amount same on both sides, push them up a little and hot glue under the mounting ears and the push them down in place. I usually glue all around the area around the bottom side and the top for strength .

Mark a spot where you want to locate your control horns. Assemble the control horns just by pushing the horn in the base slot. The hole on the horn for the push rod should be over the center of the hinge. Cut a slot in the Elevons for the control horn. Glue goes on the foam not the control horn, push the control horn into the glue and align it in a straight line to the servos

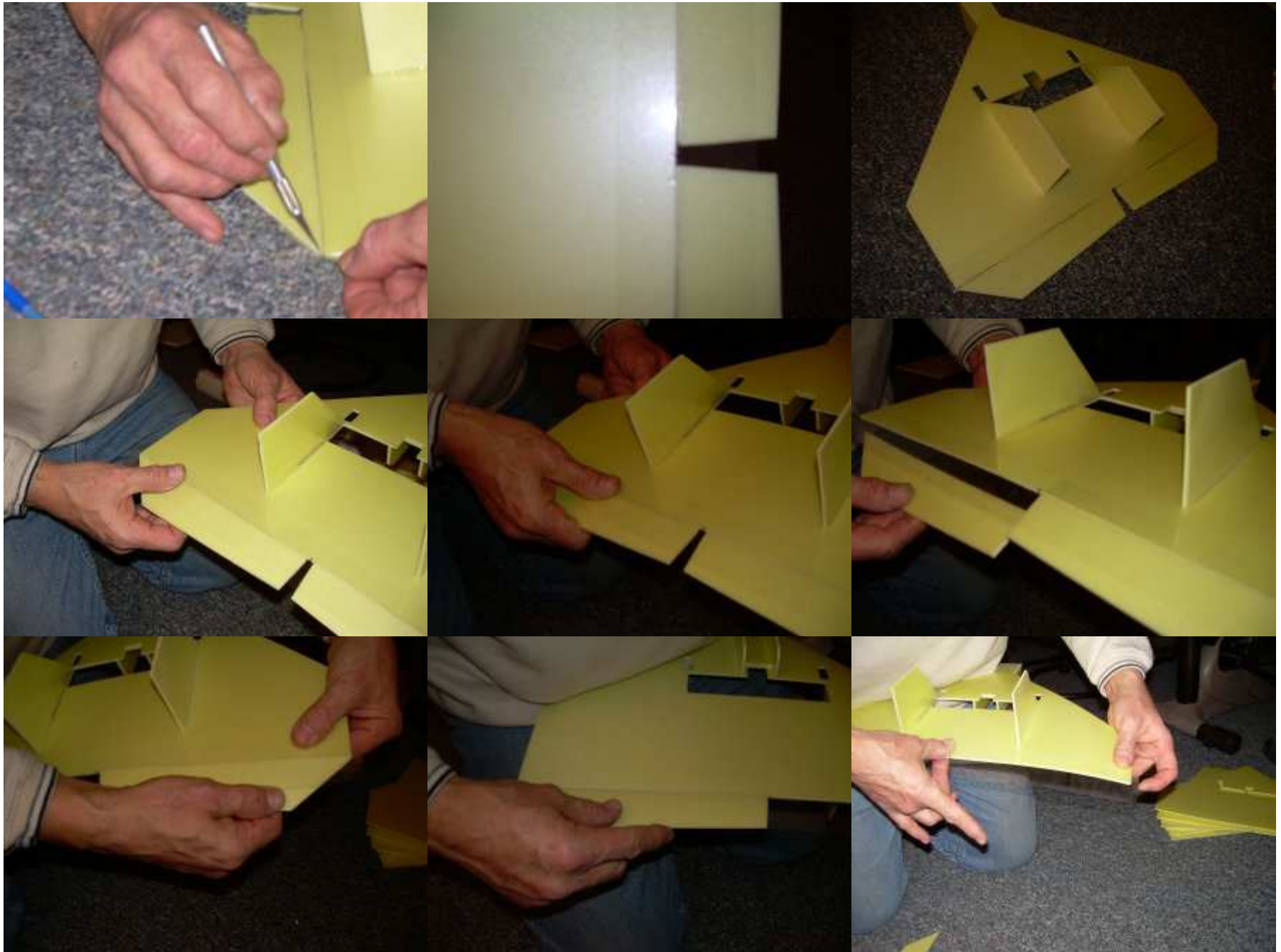
CG on the Mini Arrow is the front edge of the rectangular hole for the Prop; For mor stability make it slightly nose heavy. The motor is mounted in frontof this line also with only the shaft inside the rectangular opening.



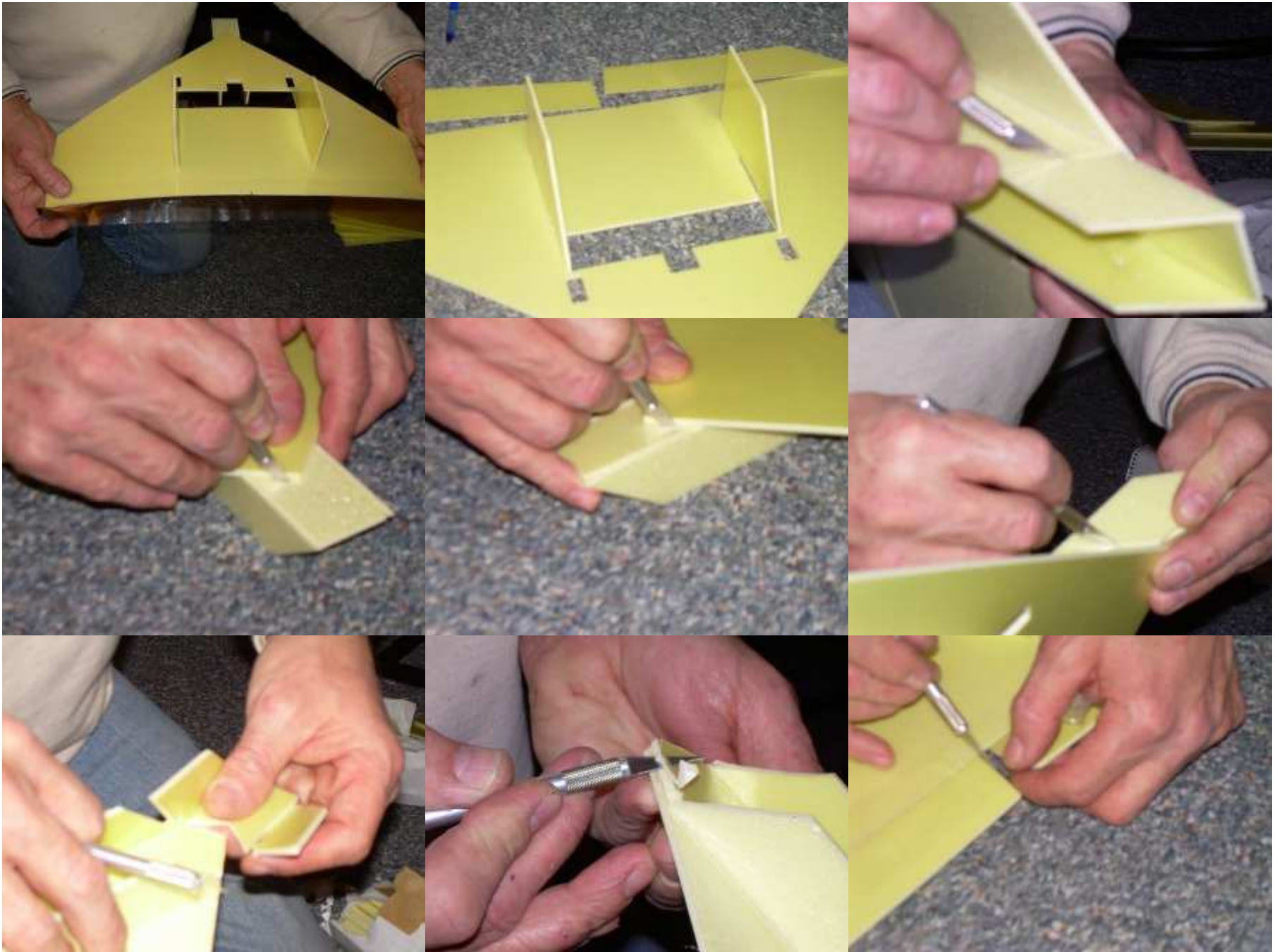
Mini Arrow Assembly Instructions



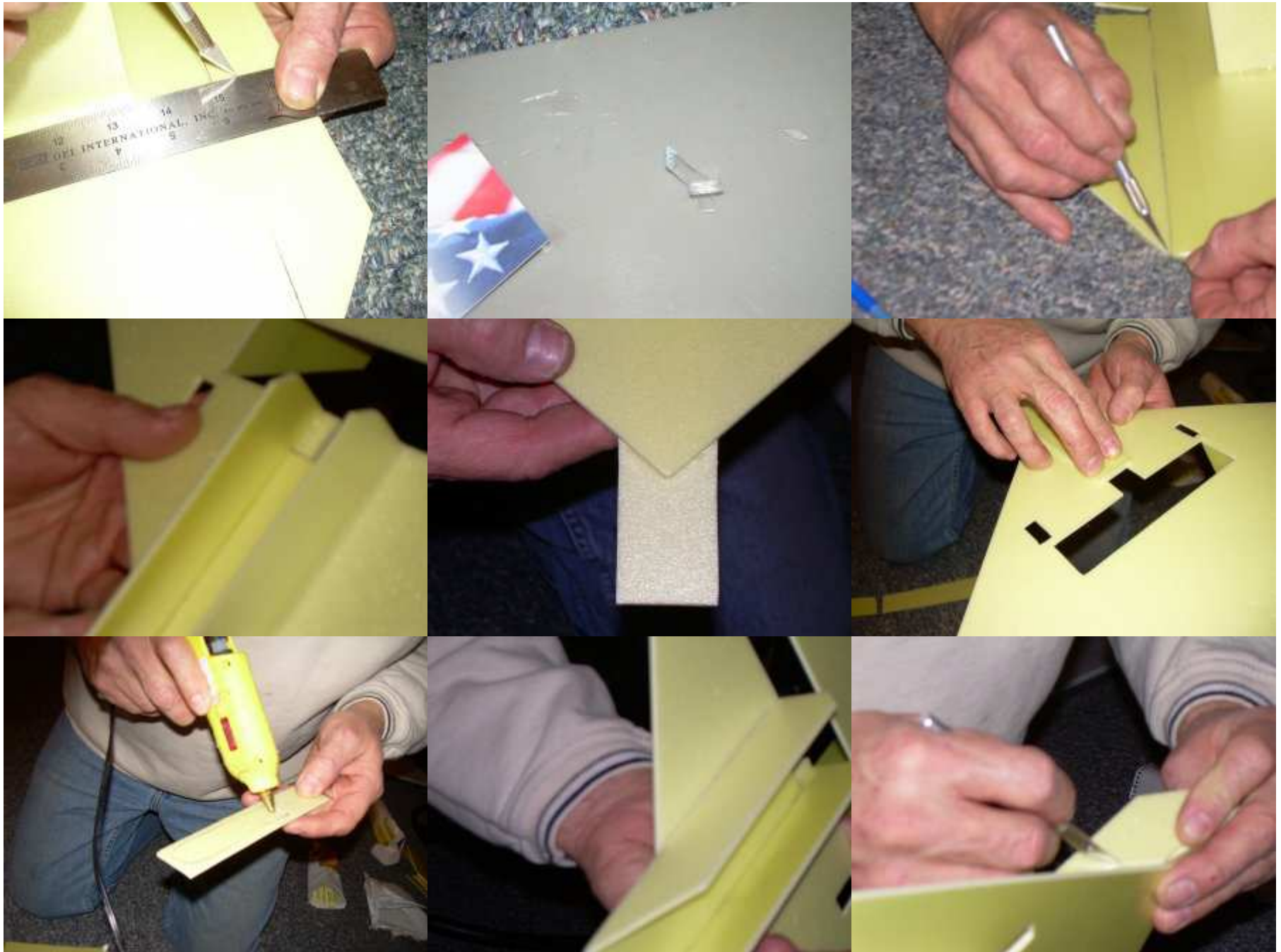
Mini Arrow Assembly Instructions



Mini Arrow Assembly Instructions



Mini Arrow Assembly Instructions



Mini Arrow Assembly Instructions

